

EDMONTONIANS
SUPPORT UKRAINE

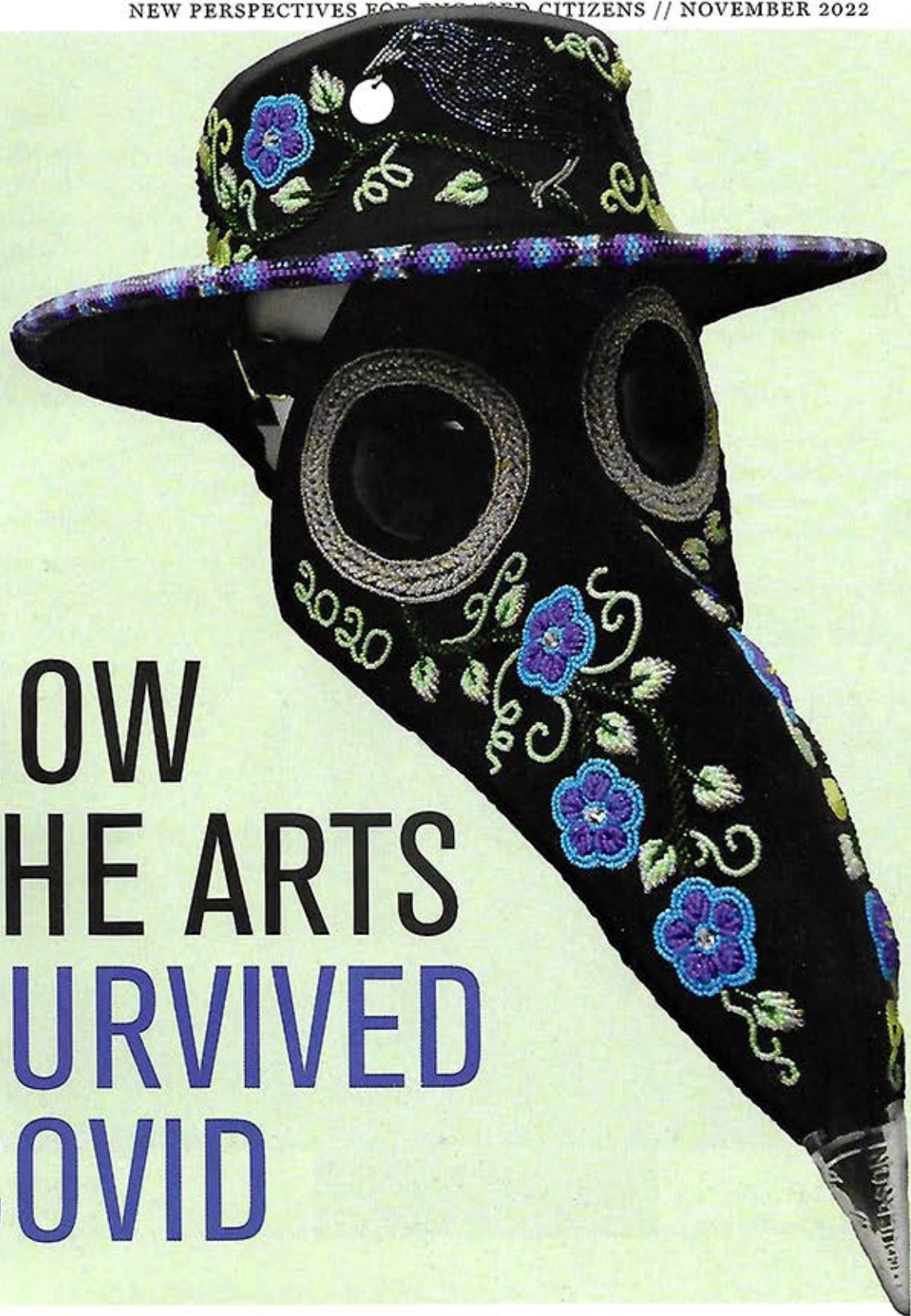
PEOPLE NEED MUSIC,
RIGHT?

SHOULD THE ARTS BE
PUBLICLY FUNDED?

alberta views

NEW PERSPECTIVES FOR ENGAGED CITIZENS // NOVEMBER 2022

HOW THE ARTS SURVIVED COVID



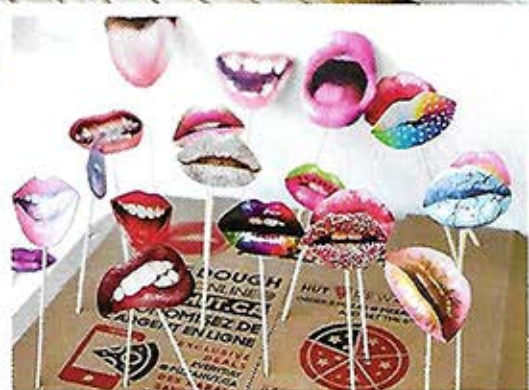
\$7.95
DISPLAY UNTIL
NOV 14, 2022

MUST-SEE EXHIBITION

Party Paintings: Life of the Party in Narrative Portraiture

by Campbell Wallace,
Multicultural Heritage Centre,
Stony Plain, until Nov 23

The portraits in this exhibition have been selected from a larger, ongoing body of work concerned with extraordinary moments found within ordinary events of people's lives. The "Party Paintings" focus not only on the potential highs of social interaction but also on the unease of its after-effects.



TOP: Exhibit installation.

MIDDLE: Allegory of Night. Acrylic and oil on canvas. 19" x 12.5".

BOTTOM: Exhibit installation.